



SHAWNEE
MISSION

SCHOOL DISTRICT



K-12 Case Studies

Midwest Food Recovery Summit
September 6-8, 2017

Craig Wood, Johnson County Health & Environment
Joan Leavens, Shawnee Mission School District



SHAWNEE MISSION
SCHOOL DISTRICT

Shawnee Mission School District

Cafeteria Composting

- The Shawnee Mission School District encompasses 14 municipalities in NE Johnson County, Kansas
- 27,521 students in 2016-2017
- 35 schools and administrative centers are currently composting
 - 26 elementary schools
 - 3 middle schools
 - 5 high schools
 - Center for Academic Achievement
- The remaining 15 schools will come on board in 2017-2018



How did we get started?

- Food Service eliminated styrofoam in 2007
- Parents piloted an elementary school project with the help of the County in 2008
- By 2012, 12 schools had initiated the project as grassroots initiatives
- The district funded a commercial compost collection service for schools wishing to participate
- In 2015, the Board of Education adopted cafeteria composting as part of the of sustainability district strategic plan and hired a coordinator

Belinder Elementary



- Started as a challenge-based project led by the fourth grade and their teacher, Jennifer Spears

Key Partnerships



Equipment – Elementary



Flatware
3 gal



Liquids
3 gal



Recycling
x2
32 gal



Landfill/Trash
32 gal



Compost
x2
32 gal

****Colored containers provide visual cues****



SHAWNEE MISSION
SCHOOL DISTRICT

Equipment – High School + Middle School



Liquids
5 gal



Recycling
50 gal



Landfill/Trash
44 gallon



Compost
x4
32 gallon

- Number of bins will vary depending on strategy for each school

Signs



Signs guide students and staff

Labeled Bins



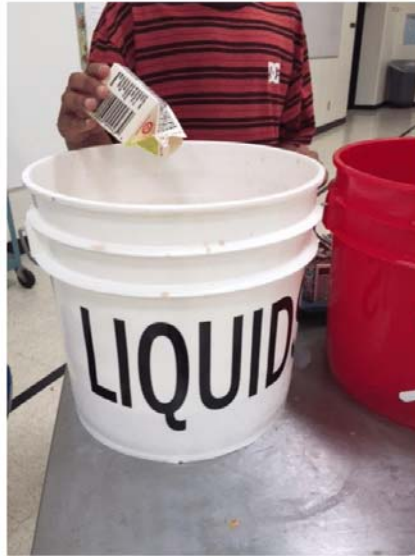
Forks and Spoons

- Place in the red bucket.



Drinks

- Pour liquids into the white bucket.



Recycle

- Drink cartons, juice boxes, water bottles go into the **blue recycle bin**.



SHAWNEE MISSION
SCHOOL DISTRICT

Trash goes to the Landfill

- Any scrunchy plastic or foil, like ketchup packets, chip bags or ziploc bags, go into the **gray** bin. WHEN IN DOUBT – THROW IT OUT



SHAWNEE MISSION
SCHOOL DISTRICT

Compost

- All food and paper, including cardboard trays and popsicle sticks, go into the **green compost bin**.



SHAWNEE MISSION
SCHOOL DISTRICT

Food Service initiatives to reduce waste

- Reusable or recyclable trays
- Compostable paper boats to serve food
- No styrofoam
- Reusable or recyclable forks and spoons
- Reduced use of plastic and foil wrappers





Reduce waste:

Take what you want – Eat what you take

- Share Table is now at the Cashier's table
 - Protecting learners with allergies
 - Items are taken to the nurse for distribution
- Students choose items from 3 of the 5 food groups. Milk does not have to be one of them.
 - Protein
 - Grains
 - Dairy
 - Fruits
 - Vegetables

Crestview PSA



SHAWNEE MISSION
SCHOOL DISTRICT

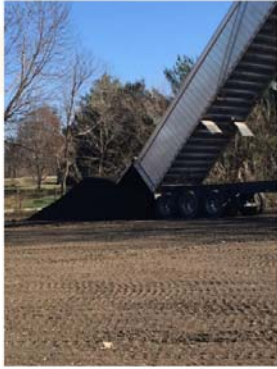
Markers of Success



- Public recognition and participation (administration, food service, students faculty, other districts)
- Public education and awareness
- 213.75 tons of food recovered 2016-2017

Full Circle

School Gardens + the Broadmoor Urban Farm



- Kansas City Community Gardens provided Missouri Organic compost and topsoil to establish five school gardens last spring– more coming online this year (66% of schools have gardens)
- 250 cubic yards (10 tractor trailer loads) of compost were delivered to the Center for Academic Achievement in March in preparation for planting this summer – half was donated



QUESTIONS?

THANK YOU!

Craig Wood, Coordinator
Solid Waste Management
Johnson County Health & Environment
Craig.Wood@jocogov.org | 913.715.6917

Joan Leavens, Coordinator
Sustainability + Community Engagement
Shawnee Mission School District
JoanLeavens@smsd.org | 913.993.8722





SHAWNEE
MISSION

SCHOOL DISTRICT